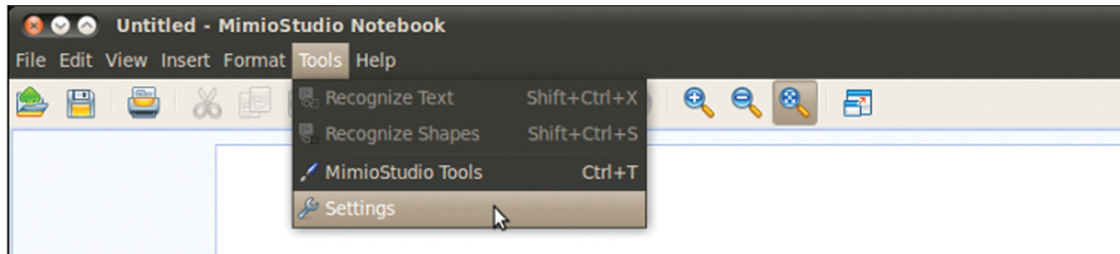
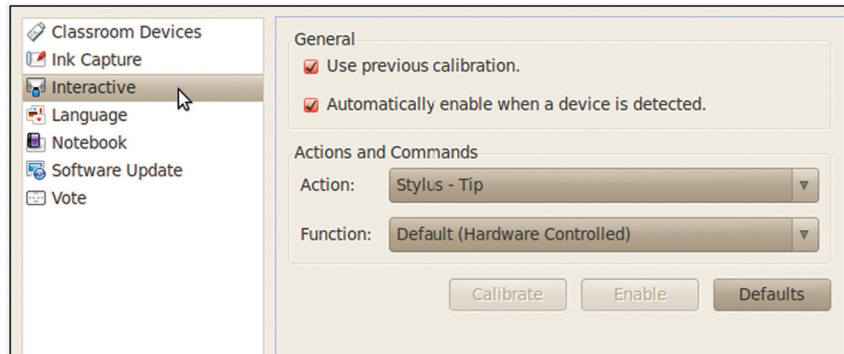


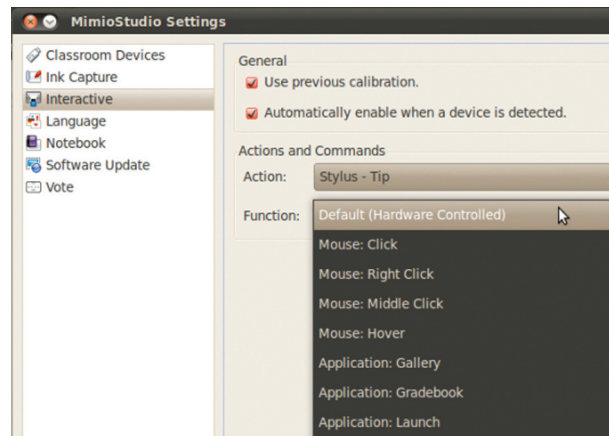
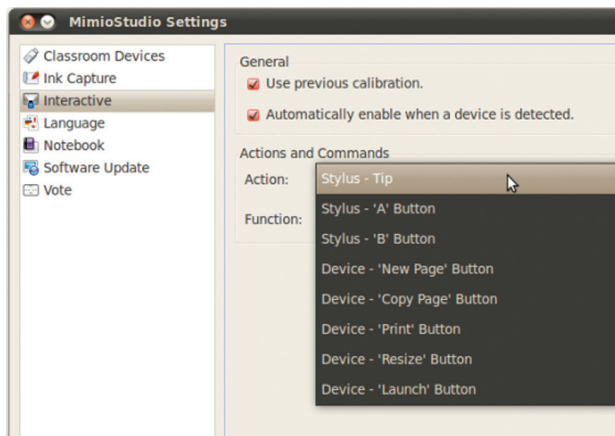
1. Click on “Tools” > “Settings”



2. Click on the “Interactive” tab on the left-side menu.



3. The “Action” pull-down menu lists up to eight buttons* that you may individually program. Select an action you wish to customize. Then select the function you wish to assign to that action from the “Function” pull-down menu. Click “OK” or “APPLY” to save.



* Seven buttons can be used with the Mimio Interactive Xi (3 stylus, 4 Xi bar).
Four buttons can be used with the MimioTeach (3 stylus, 1 Teach bar)