



mimio[®] Pad

Quick Start Guide

Copyright

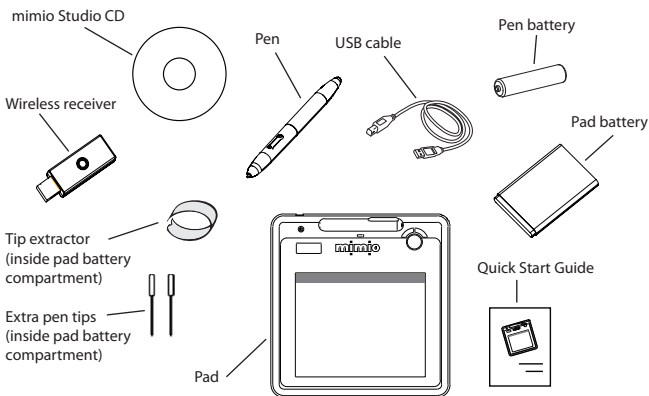
© 2008 Mimio

Congratulations on your mimio Pad purchase!

mimio Pad is a 2.4 GHz wireless pad. To configure mimio Pad for use, install the mimio Studio software and plug the wireless receiver into your computer. Once connected, you can use the mimio Pad from anywhere in the room to interact with your computer. No additional configuration is required.

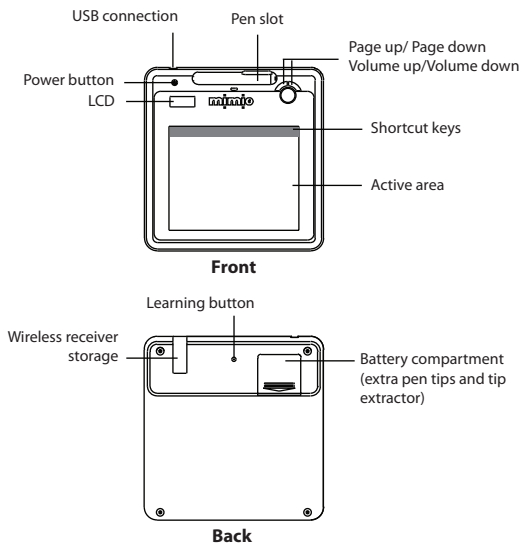
Unpacking your mimio Pad

1. Unpack the contents of your mimio Pad package.
2. Make sure you have all the items shown below.

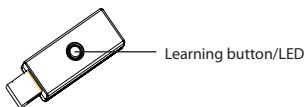


Become familiar with the features of your mimio Pad as shown in the following illustrations.

Pad



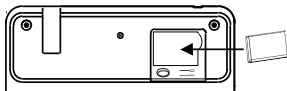
Wireless Receiver



Getting Started

Your mimio Pad is installed at the same time you install mimio Studio. Follow these instructions to begin using your mimio Pad.

Inserting the Pad Battery



1. Press down and slide off battery compartment cover.
2. Insert the battery.
3. Replace the battery compartment cover.

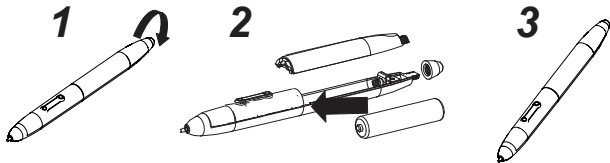
Charging the Battery

The pad battery is charged using the included USB cable. The Li-ion pad battery may contain some charge right out of the box. However, for best results, completely charge the battery before using the pad. The first time you charge the battery may take up to 10 hours. After the initial charge, recharging of the battery will take approximately two hours.

1. Plug the USB cable into the pad and into your computer.
2. When the battery is fully charged, unplug the USB cable from the pad and your computer.

Inserting the Pen Battery

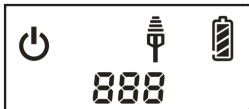
The pen uses one AAA battery.



1. Twist the top of the pen counterclockwise.
2. Lift the battery cover, and insert battery as shown.
3. Replace battery cover and pen top.

Configuring the mimio Pad

1. Plug the wireless receiver into a USB port on your computer.
2. Press and hold the power button on the pad for at least three seconds to turn on the power.
3. Place the pen tip anywhere on the active area of the pad to wake up the pad.
4. Verify that the LCD display shows at least the following indicators.










Your mimio Pad is now ready to use.

Using the mimio Pad

The feature indicators on the LCD display are described below.



	Power	The power is on.
	Battery Indicator	Shows how much charge is left in the pad battery.
	Power Saving Mode	Power saving mode is on. The pad enters power saving mode when the pen is away from the active area for three seconds.
	Connected	The pad is connected to your computer.
	Wireless Activity	The wireless receiver is active.
	Pen Sensor	Blinking: Pen tip is in range of active area; indicates hover mode. Solid: Pen tip is touching active area; indicates left-click.
	Pad Number	When more than one wireless pad is connected to a receiver, shows the number of the connected pad.

Using the Shortcut Keys

Shortcut keys are available across the top of the active area of the pad. These keys allow you to quickly access features in mimio Studio. Refer to the *mimio Studio User Guide* for a complete description of all mimio Studio features.

 Selection Tool


 Screen Clipping

 Pen

 Screen Annotation

 Highlighter

 Text Tool

 Eraser

 Spotlight Tool

 Cut

 Reveal Tool

 Copy

 Notebook

 Paste

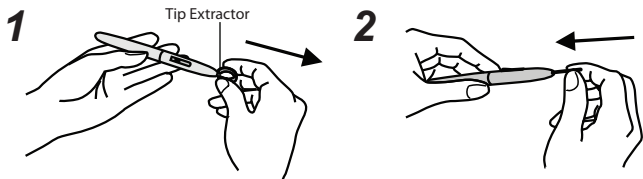
 Tools

 New Page

 Recorder

Changing the Pen Tip

After a period of use, you may need to replace the pen tip. Extra pen tips and a pen tip extractor are located inside the pad battery compartment.



1. Squeeze the pen tip with the tip extractor, and then pull out to remove the tip.
2. Push the new tip into the pen, and then press the pen tip down on a hard surface to secure.

Pairing an Additional Pad with the Wireless Receiver

1. Plug the wireless receiver into a USB port on your computer.
2. Turn on the power to the pad.
3. Simultaneously, press the learning button on the back of the pad and the learning button on the wireless receiver.



The LCD screen on the pad and the LED light on the wireless receiver will blink during the process. When the learning process is complete, the number on the LCD will show the number assigned to the additional pad (001 or greater).

mimio Pad Specifications

Interface	Wireless 2.4 GHz RF
Dimension	11.3x11.0x0.8 inches
Active Area	7.84x5.92 inches
Resolution	2000 lpi
Report Rate	120 rpst
Pen Pressure	1024 levels
Shortcut Keys	16
Hot Keys	Page up / Page down Volume up/Volume down
LCD Type	TN LCD
LCD Size	0.7x1.6 inches
Battery Type	3.7v 800 mAh Li-ion rechargeable battery
Battery Life	16 hours continuous mode
Power Source	Mini B USB (cable included)
Power Consumption	Max 50 mA
Wireless Receiver	Included

The R&TTE Directive



We, the manufacturer, hereby declare that this equipment, model RCK-T07, is in compliance with the essential requirements and other relevant provisions of Directive 1995/5/EC.

FEDERAL COMMUNICATIONS COMMISSION INTERFERENCE STATEMENT

This equipment has been tested and found to comply with the limits for a Class B digital device, pursuant to part 15 of the FCC Rules. These limits are designed to provide reasonable protection against harmful interference in a residential installation. This equipment generates, uses and can radiate radio frequency energy and, if not installed and used in accordance with the instructions, may cause harmful interference to radio communications. However, there is no guarantee that interference will not occur in a particular installation. If this equipment does cause harmful interference to radio or television reception, which can be determined by turning the equipment off and on, the user is encouraged to try to correct the interference by one or more of the following measures:

- Reorient or relocate the receiving antenna.
- Increase the separation between the equipment and receiver.
- Connect the equipment into an outlet on a circuit different from that to which the receiver is connected.
- Consult the dealer or an experienced radio/ TV technician for help.

CAUTION:

Any changes or modifications not expressly approved by the grantee of this device could void the user's authority to operate the equipment.

RF exposure warning

The equipment complies with FCC RF exposure limits set forth for an uncontrolled environment.

The equipment must not be co-located or operating in conjunction with any other antenna or transmitter.

mimio[®]

www.mimio.com

800-1011_01 Rev. 05/08